

TECHNICAL DATA SHEET

SIMPLYTOUGH[™] POLYMERIC SAND



DESCRIPTION

Hardscape professionals deserve products that are reliable and can save them time. You get both with SRW Products new polymeric sand SimplyTough[™].

At SRW Products we're always developing new products to help our customers save time and money. SimplyTough[™] meets that need by being the one-sand for all your needs. SimplyTough[™] can be used for a wide variety of applications including porcelain, natural stone and concrete pavers. It's formulated to have High Strength, Easy Activation, and No Haze, this sand is SimplyTough[™]! Packaged for safe and secure storage.

FEATURES

- One easy to use sand for ALL your needs
- No time constraints for activation (wetting)
- You can work in areas up to 500 sq. ft. at a time providing the surface stays wet
- Resists weeds, insects and sand-loss,
- Long Lasting
- Flexible
- Does not contain Portland, Fly Ash or Crushed Limestone which can cause hazing
- Our admix is lightly bonded to the sand creating a haze and dust free formula
- This sand is SimplyTough[™]!

APPLICATIONS

- Porcelain Tile
- Concrete Pavers
- Natural Stone
- Driveways
- Walkways
- Patios
- Pool Decks
- Concrete Overlays

COVERAGE

- Narrow Joints: Typical coverage is 55 - 75 sq. ft. (5.11 - 6.97 sq. m.) per bag.
- Wide Joints: Typical coverage is 25 - 35 sq. ft. (2.32 - 3.25 sq. m.) per bag.
- When using SimplyTough™ with porcelain, simply make sure it's the full depth of the porcelain.

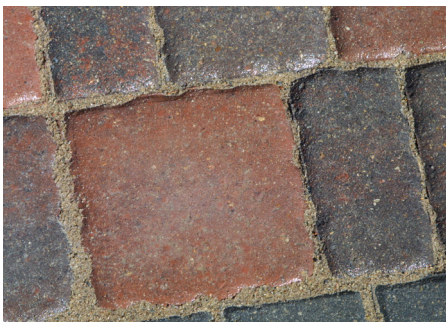
JOINT SIZE/TYPE

- Joint Width: Recommended for joints between 1/8" to 3/4" (.32 cm to 1.90 cm), 1" at intersecting points.
- Joint Depth: Minimum depth of 1½" (3.81 cm).

INSTALLATION INSTRUCTIONS

PREPARATION

- Install pavers using manufacturer's guidelines for bedding, leveling and installation. Fully clean off debris from the project area.
- Installations should have a proper drainage layer of sand with a depth of 1" (2.54 cm).
- Concrete overlays require a 1" sand layer in addition to proper drainage including slope, weep holes and through perimeter of project.
- Install porcelain tile per manufacture's recommended guidelines, with bedding sand and base.
- Compact pavers thoroughly using a rubber-plated compactor.
- If compactor is not rubber-plated, cover pavers with a woven fabric while compacting to help protect paver surface from damage.
- Pavers must be completely dry before installing polymeric sand. Wait 24 hours after rain.
- For natural stone or porcelain tile use a vibratory rubber roller or rubber mallet.



APPLICATION

- Gently tumble bag, then cut the bottom and apply SimplyTough™ evenly over the surface.
- Spread sand into joints, completely filling to the full depth of the pavers.
- Avoid pushing sand over long distances.
- Remove excess sand from surface of pavers before compacting.
- Compact filled joints using a rubber-plated compactor.
- For natural stone or porcelain tile use a vibratory rubber roller or rubber mallet to settle sand on edge of material.
- If joints settle more than ¼" reapply SimplyTough™ .
- Remove excess sand from paver surface using a soft bristle broom and set the joint height while removing residue with a leaf blower on idle.
- Once complete, joint height should be filled below the top of the paver.

ACTIVATION

- Working in areas of 350 - 500 sq. ft. (46.45 sq. m.). Lightly mist the paver surface, once surface is wet do not let surface dry out until activation is complete.
- Wait 3 minutes and repeat this process 3-4 times leaving 3 minutes in-between while gradually increasing water flow making sure to avoid pooling of surface or joints.
- The final watering should supply enough water to rinse off any residual material from the pavers. Use a blower if any water remains.
- Use a screwdriver to test for proper moisture depth of at least 1½" (1.27 cm). If depth is not achieved, immediately wet the area with a shower setting.
- If water collects on the surface during activation blow off excess using a leaf blower.

CURING

- Curing process varies and may take up to 24 hours to set.
- Lower temps and increased humidity level will increase set times.
- Wait 28 days prior to cleaning or sealing.

USER TIPS

- Paver must be completely dry with no rain forecasted for at least 24 hours. If there's a possibility of rain after activation, cover area entirely and promptly uncover once the threat has passed.
- Test product before use. Polymers may adhere to a damp surface, making difficult to remove prior to activation.
- Temperatures must remain above 32°F (0°C) throughout installation and curing.
- Proper compaction is very important for obtaining optimal joint strength.
- Continuous dampness can prevent polymeric sand from curing properly. Irrigation systems should be turned off until polymeric sand has fully cured.
- Not for use on clay pavers.

STORAGE AND SHELF LIFE

Store product in its original packaging, in a dry place and away from UV rays. Bags may be stored outside if they are properly protected with an opaque and waterproof tarp.

- If storing product outdoors in unprotected areas, inspect the pallet(s) upon receipt of goods.
- If any damage is observed to the pallet cover, bring any pallet with damaged pallet wrapping into a protected and covered area.
- Once a pallet is opened, it is important to immediately bring the material into a protected and covered area.

TRANSPORT

For more information on the proper handling and transportation of this product, please refer to the latest version of the Safety Data Sheet (SDS). Visit SRWProducts.com for an up-to-date version of this product's Safety Data Sheet (SDS).


PACKAGING

SIMPLYTOUGH™			
PART#	COLOR	SIZE	QUANTITY
SSANST TAN	TAN	50 LB BAG	49 BAGS/PLT
SSANST GRANITE	GRANITE	50 LB BAG	49 BAGS/PLT

IMPORTANT NOTICE: Since the use of this product is beyond the control of the manufacturer, no guarantee or warranty, expressed or implied is made for the merchantability, fitness or suitability for the use of this product or otherwise extending beyond the description hereof except the obligation to replace that product for portion of shipment proved defective. Furthermore, nothing contained herein shall be construed as a recommendation to use any product in conflict with existing laws and/or patents covering any material or use. Liability is limited to product replacement only. For professional use only. Test in a small, discrete area before use.

WARNINGS

KEEP OUT OF REACH OF CHILDREN

 **WARNING:** This product can expose you to Silica, crystalline (airborne particles of respirable size), which is known to the State of California to cause cancer and/or birth defects or other reproductive harm. For more information go to www.P65Warnings.ca.gov. Precaution: Contains a dry polymer that will cause eye irritation and possible eye injury. If any mixture gets into eyes, rinse immediately with clean water. If irritation persists, seek prompt medical attention. 24-HOUR CHEMICAL EMERGENCY 800-424-9300.